



**Little
Giant**

Ladders Australia

**PRO LADDER CATALOGUE
AUSTRALIA**

Little Giant

Ladders Australia

ABOUT LITTLE GIANT LADDERS - COMPANY HISTORY

In the 1970's, Little Giant Ladder Systems chairman and founder, Harold "Hal" Wing, met a German painter who had an interesting idea and a primitive prototype of a new kind of ladder. Hal enhanced the ladder and engineered what is now known as the strongest, safest, most versatile ladder in the world—the Little Giant Ladder System. This professional-grade, multi-use ladder can be set up in 24 different positions and is probably the most famous ladder in the world. Hal performed demonstrations of the ladder nationwide at state fairs and trade shows, building and packaging orders out of his garage. Working side-by-side with his wife Brigitte and their seven children, Hal built the company on a foundation of quality and innovation. Gradually, both do-it-yourselfers and professionals all over the world have come to understand the Little Giant Ladder System is the best ladder in the world.

In 2003, Little Giant Ladder Systems' sales skyrocketed after the launch of an infomercial starring Hal Wing. Instead of painting a gimmicky picture, the infomercial clearly and concisely represented the ladder's benefits, forever establishing the Little Giant brand and its products as a household name.

From its humble beginning, Little Giant Ladder Systems is now one of the world's largest manufacturers of ladders, supplying products to discerning homeowners and professionals all over the world.

CLIMB ON®



Little Giant

Ladders Australia

LITTLE GIANT LADDERS AUSTRALIA

Little Giant Ladders Australia is proudly owned and operated by an Australian family who have been in business for over 25 years.

Our team pride themselves on supplying product with only the highest standards, whilst offering a friendly, reliable and professional service to our customers.

Little Giant Ladders Australia is partnered with safety professionals all over the globe to develop real solutions to real safety problems.

At Little Giant Ladders, we aren't driven by the number of ladders we build, but by the individuals who use them – the hard-working men and women of Australia who are the backbone of industry and progress. They put their lives at risk to make things happen. In an era of progress and innovation, the traditional designs by most ladder companies are virtually unchanged. Unfortunately, ladder injuries have increased by 50% in the last decade, so the ladder industry needs to do better. We are leading the charge by supplying the safest ladders in Australia. We believe it's better to build a fence at the top of a cliff than park an ambulance at the bottom.

As Little Giant Ladders are Australia's preferred ladder dealers, we like to make it easier for customers to buy our ladders online. Make sure you check out our range for yourself, and feel free to contact us for more information. Little Giant Ladders Australia is an authorised retailer of Little Giant Ladder Systems USA.





**GOES WHERE A
MECHANICAL LIFT
OR ORDINARY
STEPLADDER
CANNOT GO**

Independent adjustment
of the outer sections
allows operators to work
safely over uneven
surfaces or stairs

**YOU CANNOT
FALL OUT**

Self-enclosing platform
is a versatile, safe
alternative to tying off

⚡ NONCONDUCTIVE
FIBERGLASS SIDE RAIL ⚡



IMAGINE

Someone you love is
standing at the edge
of a cliff. Would you
rather see a fence at
the top or an ambulance
at the bottom?



**HELPS PREVENT
FALLS DUE TO
OVERREACHING**

Extra-wide base and
fully enclosed platform



**PROUDLY
DESIGNED
ENGINEERED
& MADE IN THE
USA**
OF U.S. & IMPORTED PARTS



Safe and easy to use on stairs, stadium seating, stages, and other uneven surfaces or at multiple heights



Outriggers for increased side-tip stability



Fully enclosed work platform



Move the Cage while set up with the Wheel Lift™ casters

1-Year Limited Warranty • 150kg Australian Industrial Rating AS1892.1:2018

Part Number	Model	Min/Max Standing Level	Max Reach*	Min/Max Footprint	Storage Height	Base Width	Storage Depth	Guardrail Height	Weight
18503-240**	3' - 5'	0.90 - 1.50m	3.50m	1.10 - 1.45m	2.35m	1.15m	0.45m	1.10m	46kgs
18509-240	5' - 9'	1.50 - 2.65m	4.65m	1.40 - 2.25m	2.95m	1.15m	0.45m	1.10m	59kgs
18515-240	8' - 14'	2.35 - 4.05m	6.05m	1.90 - 3.25m	3.85m	1.15m	0.45m	1.10m	68kgs

*A 1.7m tall person with a 30cm vertical reach

**Outriggers not available on 3'-5' models

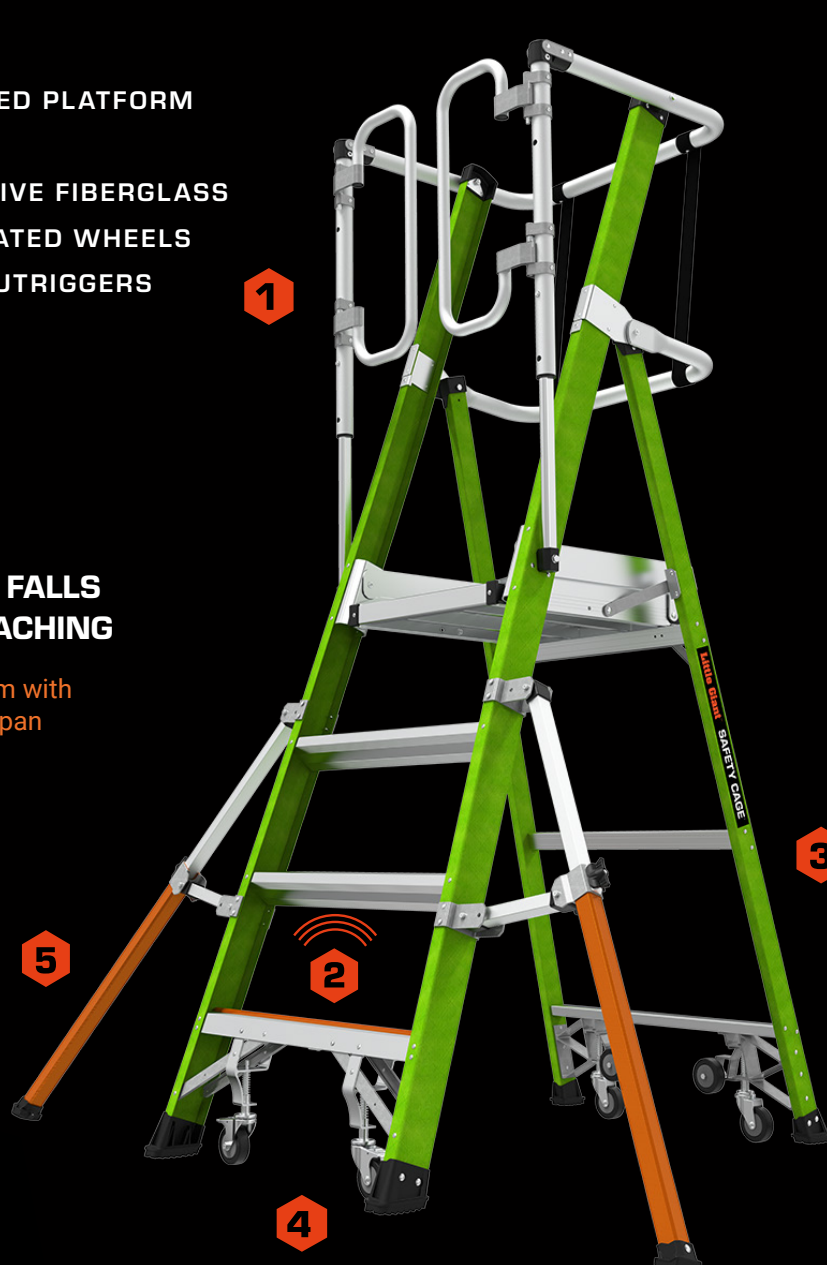
WE'VE SOLVED THE TIE-OFF PROBLEM

Save time and money over rented scaffolding

1. FULLY ENCLOSED PLATFORM
2. GROUND CUE[®]
3. NON-CONDUCTIVE FIBERGLASS
4. WEIGHT ACTIVATED WHEELS
5. STABILIZING OUTRIGGERS

HELPS PREVENT FALLS DUE TO OVERREACHING

Fully enclosed platform with
5" kick plate and midspan



SLIM
STORAGE
PROFILE



⚡ NONCONDUCTIVE
FIBERGLASS SIDE RAIL ⚡





Enclosed work platform; no tie-off required



Wheel it easily from place to place



Audible and tactile notification on bottom step



Feels like standing on solid ground

1-Year Limited Warranty • 150kg Australian Industrial Rating AS1892.1:2018

Part Number	Model	Comparable Stepladder Size	Stepladder Highest Standing Level	Stepladder Max Reach*	Footprint	Storage Height	Storage Width at Base	Weight
19702	2'	4'	56cm	2.6m	86cm	2.0m	70cm	20kgs
19704-146	4'	6'	1.1m	3.1m	1.2m	2.6m	90cm	24kgs
19706-146	6'	8'	1.7m	3.7m	1.6m	3.2m	100cm	29kgs
19708-146	8'	10'	2.3m	4.3m	1.9m	3.8m	105cm	31kgs
19710-146	10'	12'	2.9m	4.9m	2.3m	4.4m	110cm	37kgs

*A 1.7m tall person with a 30cm vertical reach

• Platform Size: 45cm x 55cm • Guardrail Height: 106cm

3', 4', 5' & 6' ENCLOSED, FIBERGLASS PLATFORM LADDER

1. SIMPLE SETUP AND STORAGE

One movement, one person, one second—that's all you need to handle the Fortress like a pro. Just push the platform handle to deploy or pull it to fold.

2. ENCLOSED PLATFORM

The extra-large standing platform features a gated, wraparound enclosure that shuts automatically when you step in.

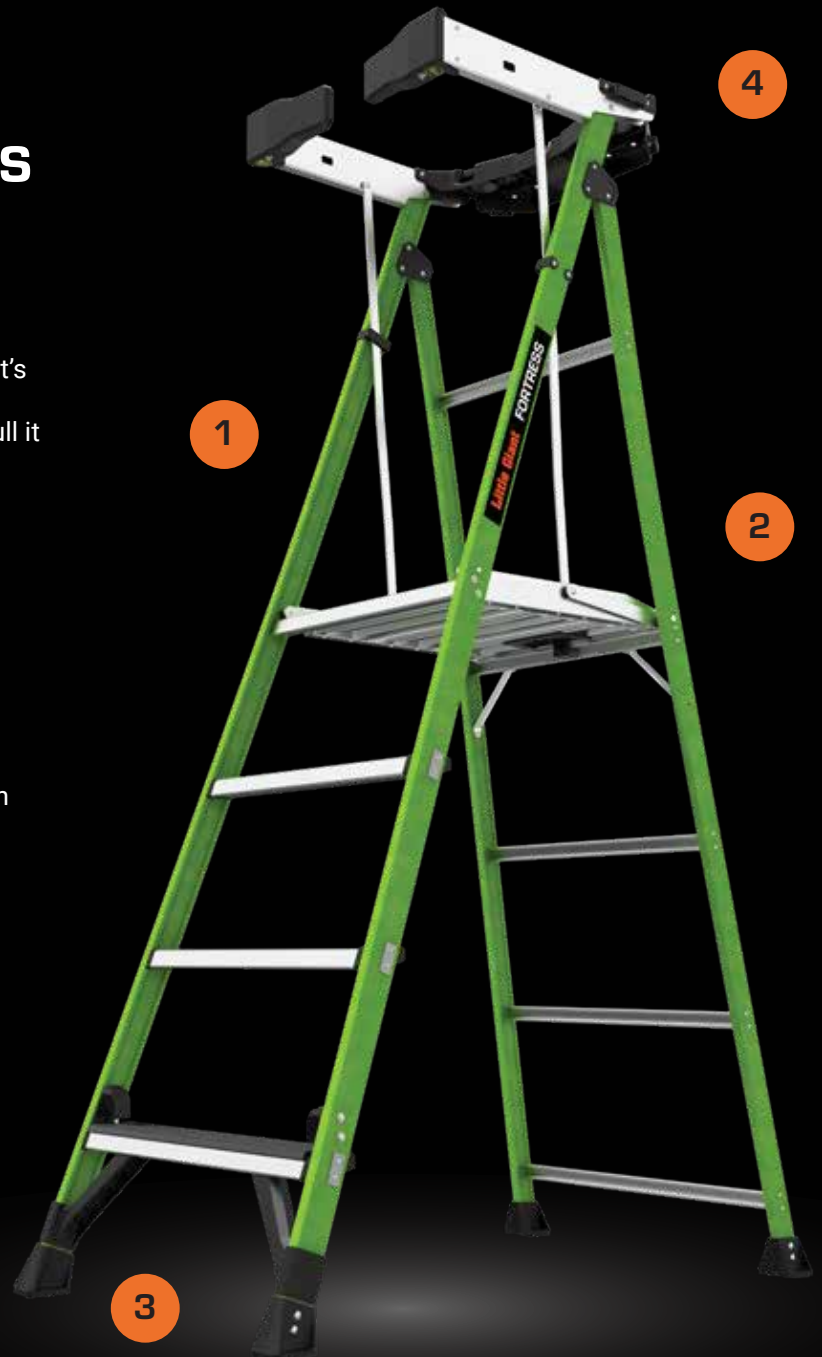
3. GROUND CUE

Show your ankles some love. 20% of ladder accidents come from missing the last step on the way down. With the Ground Cue®, putting weight on the bottom step makes an audible and tactile "click," letting you know you've reached the final step of the ladder.

4. INNOVATIVE TOOL TRAY

Slots, holes, hooks, and a closeable container. This versatile top cap is our best one yet—plus, you can lean on it.

⚡ NONCONDUCTIVE
FIBERGLASS SIDE RAIL ⚡



⚡ NON-CONDUCTIVE FIBERGLASS
FIBRA DE VIDRIO NO CONDUCTORA





Platform A-Frame Stepladder



Auto-Closing Gate



Easy Set-Up & Storage Space



Wraparound Enclosure



Large Standing Platform



Top Cap Tool Tray

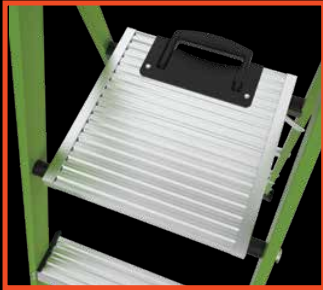
PRODUCT DESCRIPTION

This fortress wasn't made to keep things out—it was made to keep you in. With a large standing platform, wraparound enclosure, and auto-closing gate, the Fortress™ takes the benefits of a platform ladder and combines them with the lightweight, quick-and-easy setup of a stepladder.

1-Year Limited Warranty • 150kg Australian Industrial Rating 1892.1:2018

Part Number	Model	Name	Platform Height	Stepladder Max Reach*	Footprint	Platform Size	Storage Height	Storage Depth	Weight
19303	3'	2 Step + 1 Platform	80cm	2.8m	97cm	45cm x 48cm	2.2m	11cm	13kg
19304	4'	3 Step + 1 Platform	1.1m	3.1m	1.1m	45cm x 48cm	2.5m	11cm	15kg
19305	5'	4 Step + 1 Platform	1.4m	3.4m	1.3m	45cm x 48cm	2.9m	11cm	17kg
19306	6'	5 Step + 1 Platform	1.7m	3.7m	1.4m	45cm x 48cm	3.2m	11cm	18kg

*A 1.7m tall person with a 30cm vertical reach



XL STANDING
PLATFORM



⚡ NONCONDUCTIVE
FIBERGLASS SIDE RAIL ⚡



LIGHTWEIGHT



NON-CONDUCTIVE
FIBREGLASS RAILS



150 KG RATED



XL STANDING
PLATFORM



GROUND CUE®
BOTTOM STEP ALERT



WORK STATION



COMFORT STEPS



TUFF-N-LITE

FEATURES



GROUND CUE®
BOTTOM STEP ALERT



WORK STATION
TOOL TRAY



FULL BOX RAIL
CONSTRUCTION



The XL Standing Platform reduces dangerous falls and is comfortable to stand on for extended periods while working.



A full-box construction makes the ladder look slim, but is stronger and lighter than most traditional A-frame ladders.



Made from lightweight, non-conductive fibreglass, you can safely use it around electricity.

1-Year Limited Warranty • 150kg Australian Industrial Rating AS1892.1:2018 • Patents Pending

Part Number	Model	Stepladder Highest Standing Level	Stepladder Max Reach*	Footprint	Storage Height	Storage Width	Storage Depth	Weight
15364-440	1.2m (2 step)	57cm	2.6m	69cm	1.3m	48cm	10cm	5.5kg
15365-440	1.5m (3 step)	86cm	2.85m	89cm	1.6m	52cm	10cm	6.5kg
15366-440	1.8m (4 step)	1.2m	3.15m	1.1m	1.9m	56cm	10cm	8.5kg
15368-440	2.4m (6 step)	1.75m	3.7m	1.5m	2.5m	61cm	10cm	11.0kg

*A 1.7m tall person with a 30cm vertical reach

17' & 22' NON-CONDUCTIVE FIBERGLASS MULTI-POSITION LADDER

1. MULTI-POSITION LADDER

Converts to stepladder, extension, 90-degree, and staircase configurations.

2. PATENTED RAPID LOCK®

Twist the patented Rapid Lock, adjust outer section to desired height, twist to lock.

3. NON-CONDUCTIVE, HI-VIZ GREEN FIBERGLASS

Our Hi-Viz green fiberglass is lightweight and non-conductive. The color is proven to increase visibility, helping prevent injuries and accidents while in use.

4. ACCESSORY PORTS

Equipped with accessory ports for use with Airdeck Accessory

5. ADJUSTABLE OUTRIGGERS

Equipped with adjustable outriggers that add side-tip stability and leg-leveling capability, so you can work safely on even the toughest terrain.

6. V-BAR & INNOVATIVE FEET

V-bar and innovative feet on the extension side of the ladder allows for easy setup on inside and outside corners, walls and poles.

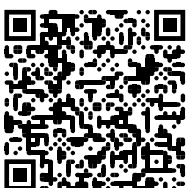
7. EASY TRANSPORTATION

Integrated Tip & Glide™ wheels help you move the ladder easily from job to job and the ladder's weight-balanced carrying handle simplifies transportation.



⚡ NONCONDUCTIVE FIBERGLASS SIDE RAIL ⚡

⚡ NON-CONDUCTIVE FIBERGLASS
FIBRA DE VIDRIO NO CONDUCTORA





90-Degree



Tip & Glide™ Wheels



Leveling Outriggers



Inside Corner Feet



A-Frame



V-Bar On Pole



Extension

PRODUCT DESCRIPTION

You need equipment you can count on, no matter where the job takes you. The Conquest™ All-Terrain from Little Giant Ladders® is a lightweight, easy-to-use, fiberglass multi-position ladder with everything you could need to get your work done quickly and efficiently.

1-Year Limited Warranty • 150kg Australian Industrial Rating 1892.1:2018

Part Number	Model	Stepladder Size Min-Max	Extension Size Min-Max	Extension Highest Standing Level Min-Max	Storage Height	Storage Depth	Weight
17107-001	17	1.4m - 2.3m	2.7m - 4.6m	3.6m	1.4m	25cm	19kg
17102-001	22	1.7m - 2.9m	2.4m - 5.8m	4.7m	1.7m	25cm	23kg

*A 1.7m tall person with a 30cm vertical reach

13', 17' & 22' MULTI-POSITION LADDER

1. MULTI-POSITION LADDER

Set up the Dark Horse in A-frame, extension, 90-degree and staircase positions, for an easy climbing experience.

2. NON-CONDUCTIVE, HI-VIZ GREEN FIBERGLASS

The Dark Horse is made with Little Giant's iconic, non-conductive, Hi-Viz green fiberglass.

3. WIDE-FLARED BASE

The ladder's wide-flared base increases side-tip stability to prevent falls from accidental overreaching.

4. RAPID LOCKS™

Quickly adjust the ladder size with an easy turn of the wrist.

5. TIP & GLIDE™ WHEELS

Easily transport the Dark Horse from job to job without breaking a sweat.



⚡ NONCONDUCTIVE
FIBERGLASS SIDE RAIL ⚡



The Little Giant® Dark Horse™ combines some of our best ladder features into one versatile, multi-position ladder that will suit your ladder needs for years to come. Set it up in A-frame, extension, 90-degree, and staircase positions. No matter where the job takes you, the Dark Horse gets you there.



DARK HORSE 2.0™

1-YEAR LIMITED WARRANTY / 150KG AUSTRALIAN INDUSTRIAL RATING AS1892.1:2018



90-Degree



Rapid Lock™



A-Frame



Extension



Palm Button



Tip & Glide™ Wheels



Storage Position

PRODUCT DESCRIPTION

The Little Giant® Dark Horse™ combines some of our best ladder features into one versatile, multi-position ladder that will suit your ladder needs for years to come. Set it up in A-frame, extension, 90-degree, and staircase positions. No matter where the job takes you, the Dark Horse gets you there.

1-Year Limited Warranty • 150kg Australian Industrial Rating AS1892.1:2018

Part Number	Model	Stepladder Size Min-Max	Stepladder Highest Standing Level Min-Max	Stepladder Max Reach*	Extension Size Max	Extension Highest Standing Level Min-Max	Extension Max Reach*	Storage Height	Storage Depth	Weight
16113-440	13	1.1m-1.7m	30cm-90cm	2.9m	3.4m	1.2m-2.4m	4.3m	1.1m	23cm	14kg
16117-440	17	1.4m-2.3m	60cm-1.5m	3.5m	4.6m	1.8m-3.5m	5.5m	1.4m	23cm	17kg
16122-440	22	1.7m-2.9m	90cm-2.0m	4.0m	3.4m	2.4m-4.7m	6.7m	1.7m	23cm	21kg

*A 1.7m tall person with a 30cm vertical reach

KING KOMBO 2™ INDUSTRIAL

1-YEAR LIMITED WARRANTY / 150KG AUSTRALIAN INDUSTRIAL RATING AS1892.1:2018

6' & 8' 3-in-1 COMBINATION LADDER

⚡ NONCONDUCTIVE
FIBERGLASS SIDE RAIL ⚡

1. ONE-HANDED GRIP-N-GO™ HINGE

One-handed Grip-N-Go hinge operation allows for a quick and seamless transition between stepladder, extension and leaning configurations.

2. ROTATING WALL PAD

Get closer to your work with the rotating wall pad, which conforms to inside and outside corners, walls, poles and 2x4 studs.

3. NON-CONDUCTIVE, HI-VIZ GREEN FIBERGLASS

Our Hi-Viz green fiberglass is lightweight and non-conductive. The color is proven to increase visibility, helping prevent injuries and accidents while in use.

4. QUAD POD™

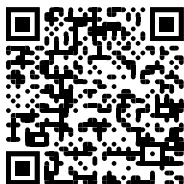
While in the extension position, allows user to work on inside and outside corners, walls, poles and studs.

5. DUAL-PURPOSE LEGS

Functional rear section allows access to tight workspaces between wall studs, ceiling trusses and roof or attic access ports.

6. GROUND CUE™

Up to 20% of all ladder injuries happen from missing the bottom step while descending the ladder. The Ground Cue makes an audible and tactile "click" that alerts you when you've reached the bottom step.



NON-CONDUCTIVE FIBERGLASS
FIBRA DE VIDRIO NO CONDUCTORA





Inside Corner Rotating Wall Pad



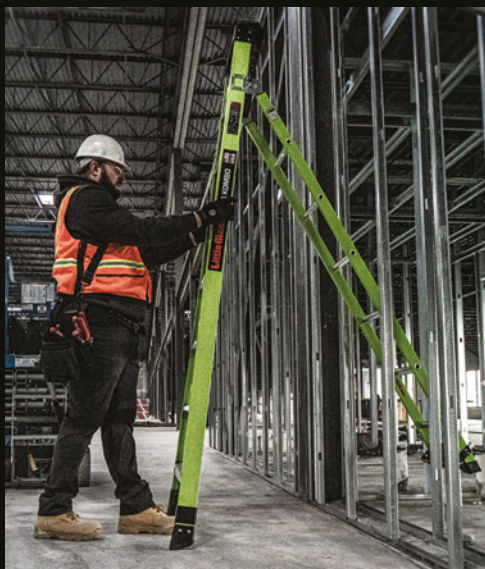
One-Handed Grip-N-Go Hinge



Quad Pod On Flat Wall



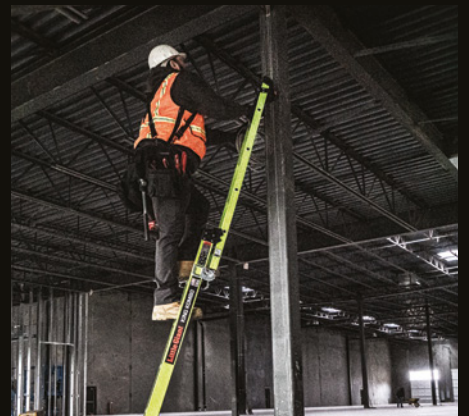
Outside Corner Rotating Wall Pad



Fit Between Studs & Other Tight Workspaces



Quad Pod on Outside Corner



Extension

PRODUCT DESCRIPTION

It's the pro tool that helps you get stuff done faster than ever. The pinnacle of ladder technology, the King Kombo™ from Little Giant Ladder Systems® is tough as nails and versatile enough for any tradesman. Recognized for its superior safety and innovation, the King Kombo is the most awarded ladder ever, having received awards at the 2019 Pro Tool Innovation Awards, 2019 OH&S New Product of the Year Awards, SAFE Awards from the National Association of Homebuilders and more.

1-Year Limited Warranty • 150kg Australian Industrial Rating AS1892.1:2018

Part Number	Model	Stepladder Highest Standing Level	Stepladder Max Reach*	Extension Highest Standing Level	Extension Max Reach*	Leaning Ladder Highest Standing Level	Leaning Ladder Max Reach*	Storage Height	Storage Depth	Weight
13906-071	6'-10'	1.2m	3.2m	2.0m	4.0m	85cm	2.9m	1.9m	18cm	11kg
13908-071	8'-14'	1.8m	3.8m	3.3m	5.3m	1.4m	3.4m	2.5m	18cm	14kg

*A 1.7m tall person with a 30cm vertical reach

3-STEP NON-CONDUCTIVE FIBERGLASS STEP STOOL

1. NON-SLIP STAIRCASE STEPS

Three steps to your truck bed, grab your equipment, three steps back down—all while facing forward. Ultra-wide, non-slip steps with almost no overlap make this step stool a genuine portable staircase.

2. TOOL TRAY AND HANDRAIL

Keep your tools close and your safety rail closer. The rotating safety handrail is both a sturdy lean point for added stability and a versatile tool tray for equipment that needs to be on hand.

3. SLIM PROFILE

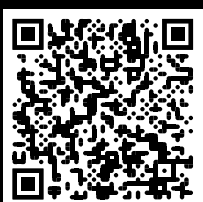
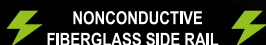
Stop lugging a ladder to do a stool's work. The Jumbo Step is lightweight, easy to carry, and folds into a slim storage profile.

4. OVERSIZED FEET

Need to set up over grating? No problem. The Jumbo Step's slip-resistant, oversized feet keep it steady and secure on a variety of industrial surfaces.

5. NON-CONDUCTIVE FIBERGLASS

Made from durable fiberglass, this step stool is designed for sites with electrical safety requirements.



JUMBO STEP™ F/G

1-YEAR LIMITED WARRANTY / 150KG AUSTRALIAN INDUSTRIAL RATING AS1892.1:2018



Stable Hand Rail



Large Tool Tray



Portable Staircase



Quick-Release Rotating Hand Rail



Slim Profile



Wide Steps with Ridged Traction



Get Closer to Your Work

A compact step stool for not so compact jobs. The Little Giant® Jumbo Step™ is the lightweight alternative to grabbing your six-footer when you only need two or three. Ultra wide steps make walking up the Jumbo Step as easy as walking up a staircase. Available in a 3 step model, the Jumbo Step™ exceeds AS1892.1:2018 Australian Standards and has a 150kg Industrial Rating.

1-Year Limited Warranty • 150kg Australian Industrial Rating 1892.1:2018

Name	Part Number	Model	Highest Standing Level	Max Reach*	Step Size	Storage Height	Storage Width at Base	Storage Depth	Weight
Jumbo Step F/G	11933	3 Step	65cm	2.65m	35cm x 22cm	1.1m	0.55m	11cm	8kg

*A 1.7m tall person with a 30cm vertical reach

3' STEP STOOL BUILT FOR THE TRADES

⚡ NONCONDUCTIVE
FIBERGLASS SIDE RAIL ⚡

1. QUICK SETUP

No hassle, no messing with latches and no pinched fingers. The Sure Step's nylon spreader straps let gravity do the work: just grab one of the top steps and let the stool fall open or closed.

2. OVERSIZED FEET

Set up anywhere with confidence. Slip-resistant, oversized feet keep the Sure Step exactly where you put it, whether that's on solid ground or a grated surface.

3. FULL-BOX STEPS

The Sure Step features treaded full-box steps that are climbable on either side. Plus, the split top step means you have a wider, more stable standing platform when you're furthest from the ground.

4. NON-CONDUCTIVE FIBERGLASS

Made from durable, lightweight fiberglass, this step stool lets you work fearlessly around electricity.

5. COMFORTABLE TO STRADDLE*

The Sure Step supports a straddle position, making it easy to change working directions.



When you need a step stool that's as fast as you are, the Little Giant® Sure Step™ has your back.

This non-conductive, fiberglass step stool is as sturdy as it is lightweight, and the nylon spreader straps make folding the Sure Step™ a one-handed, simple process. Available in a 3 step model, the Sure Step™ exceeds the AS1892.1:2018 Australian Standards and has a 150kg Industrial Rating.





Heavy-Duty Oversized Feet



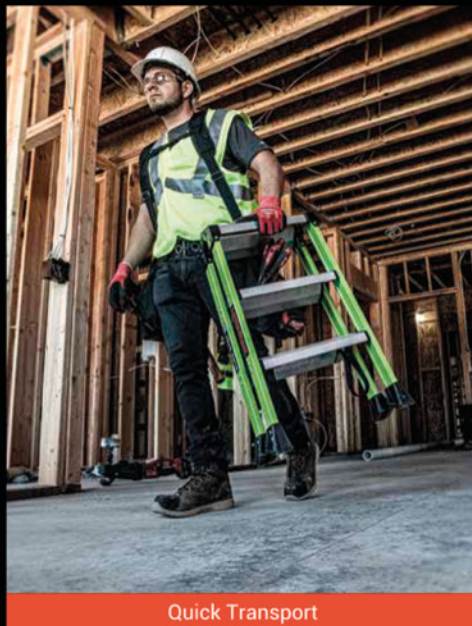
Quick Setup with Spreader Straps



Full-Box Steps on Both Sides



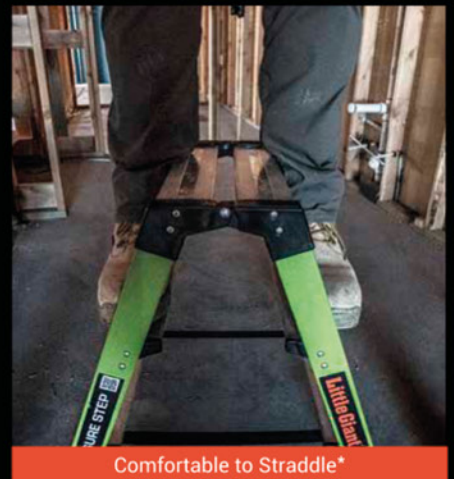
Wide Steps with Ridged Traction



Quick Transport



Stable Standing Surface



Comfortable to Straddle*

1-Year Limited Warranty • 150kg Australian Industrial Rating 1892.1:2018

Name	Part Number	Model	Highest Standing Level	Max Reach*	Floor to 1st Step	Storage Height	Storage Width at Base	Storage Depth	Weight
Sure Step	11953	3 Step	65cm	2.7m	22cm	75cm	47cm	20cm	5kg

*A 1.7m tall person with a 30cm vertical reach

IT'S NOT JUST A STEPSTOOL

Spacious, sturdy steps feel like standing on the ground

1-YEAR LIMITED WARRANTY / 150KG AUSTRALIAN INDUSTRIAL RATING AS1892.1:2018



Quick, stable, and strong



Folds to a thin, convenient storage size



Easy to move with Tip & Glide™ Wheels



150kg Capacity



Folds to a thin, convenient storage size



Easy to move with Tip & Glide™ Wheels



Safe, sturdy, portable staircase

1-Year Limited Warranty • 150kg Australian Industrial Rating 1892.1:2018

Part Number	Model	Stepladder Max Height	Stepladder Max Reach*	Highest Standing Level	Step Size	Base Footprint	Storage Width at Base	Storage Depth	Weight
10210BA-440	2 Step with bar	80cm	2.8m	45cm	35 x 23cm	60cm	55cm	13cm	7kgs
10310BA-440	3 Step with bar	1.1m	3.1m	65cm	35 x 23cm	90cm	55cm	13cm	10kgs
10410BA-440	4 Step with bar	1.4m	3.4m	90cm	35 x 23cm	1.2m	55cm	13cm	12kgs
10510BA-440	5 Step with bar	1.7m	3.7m	1.2m	35 x 23cm	1.2m	55cm	13cm	14kgs
10210A-440	2 Step no bar	80cm	2.8m	45cm	35 x 23cm	60cm	55cm	13cm	6kgs
10310A-440	3 Step no bar	1.1m	3.1m	65cm	35 x 23cm	90cm	55cm	13cm	8kgs
10410A-440	4 Step no bar	1.4m	3.4m	90cm	35 x 23cm	1.2m	55cm	13cm	11kgs

*A 1.7m tall person with a 30cm vertical reach



JUMBO STEP™

The ultimate combination of
lightweight, stability,
and strength



The safety bar is also
a convenient tool tray



LIFETIME LIMITED WARRANTY | 150KG AUSTRALIAN INDUSTRIAL RATING AS1892.1:2018

Up to 20% lighter than any
comparable step stool



Rated 150kgs for professional,
industrial and household use.



Large 7.5cm x 6.5cm nonslip shoes
provide great traction over almost any
surface including drains and grates



Simple to store with a
10cm storage depth

Lifetime Limited Warranty • 150kg Australian Industrial Rating AS1892.1:2018

Part Number	Model	Highest Standing Level	Rail Height from Top Step	Max Reach	Step Size	Storage Height	Storage Width at Base	Storage Depth	Weight
11902-440	2 Step	45cm	70cm	2.8m	35x21cm	80cm	55cm	10cm	5kg
11903-440	3 Step	65cm	70cm	3.1m	35x21cm	1.2m	55cm	10cm	7kg
11904-440	4 Step	90cm	70cm	3.4m	35x21cm	1.4m	55cm	10cm	9kg

*A 1.7m tall person with a 30cm vertical reach

17', 22', & 26' COMPLIES WITH AUSTRALIAN STANDARDS AS 1892 MULTI-POSITION LADDER

1. MULTI-POSITION LADDER

Easily convert to stepladder, extension ladder, 90-degree, staircase and trestle-and-plank scaffolding positions.

2. SAFETY RAILS

Use horizontally to work around windows and gutters. Use vertically as a walk-through from ladder to roof and back.

3. RATCHET™ LEG LEVELERS

Adjust the ladder's legs for use on uneven ground.

4. ACCESSORY PORTS

Use your favorite Little Giant ladder accessories.

5. TWO-PERSON STEPLADDER

Exceeds AS1892.1:2018 Australian Standards. In stepladder position, it holds 150kgs on both sides

6. TIP & GLIDE™ WHEELS

Easily transport the Epic from job to job place without breaking a sweat.





Double-Sided Two-Person Ladder



Rapid Locks



Safety Rail Stand-Off Position



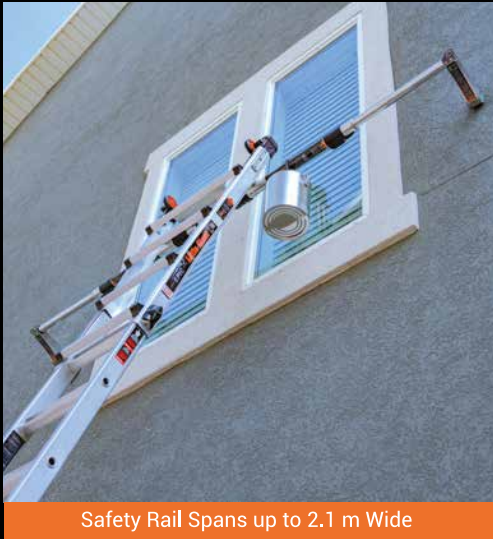
Walk-through Safety Rails



Ratchet Leg Leveler



Accessory Ports for AirDeck



Safety Rail Spans up to 2.1 m Wide

PRODUCT DESCRIPTION

The Epic™ from Little Giant Ladders® is a multi-position ladder in its ultimate form. Adjust your ladder to meet the needs of your project, so you can work more efficiently than ever. This tough-as-nails ladder is equipped with a variety of features that set this ladder apart from the rest.

Lifetime Limited Warranty • 150kg Australian Industrial Rating AS1892.1:2018

Part Number	Model	A-Frame Min/Max Height	Stepladder Highest Standing Level Min-Max	Extension Min/Max Height	Extension Highest Standing Level Min-Max	Storage Height	Storage Depth	Weight
16817-818	17	1.4m - 2.3m	90cm - 1.8m	2.7m - 4.6m	1.8m - 3.5m	1.4m	23cm	17kg
16822-818	22	1.7m - 2.9m	1.2m - 2.3m	3.3m - 5.8m	2.4m - 4.7m	1.7m	23cm	21kg
16826-818	26	2.0m - 3.5m	1.5m - 2.9m	4.0m - 7.0m	3.0m - 5.9m	2.0m	23cm	25kg

*A 1.7m tall person with a 30cm vertical reach

UNEVEN TERRAIN? NOT A PROBLEM WITH BUILT-IN LEG LEVELERS

1. VERSATILE WORKSPACE

Quick and easy to adjust from storage to multiple project-specific positions, including A-frame, extension, 90-degree, staircase and trestle-and-plank scaffolding.*

*Trestle Brackets™ sold separately

2. EASY ADJUSTMENT

Using the Rapid Lock™ extension system is as easy as twisting, extending to your desired height and retwisting.

3. LEVELING LEGS

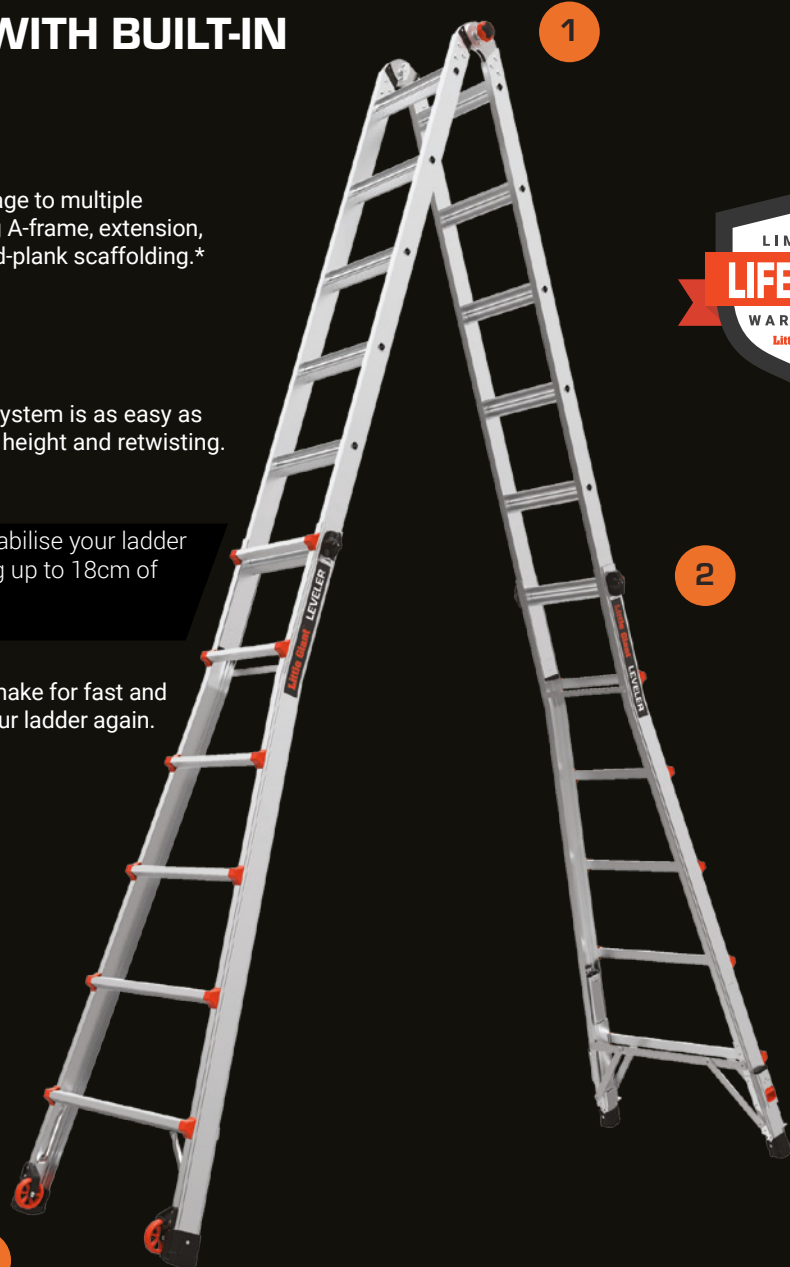
Uneven terrain? Not a problem. Stabilise your ladder with Ratchet™ leg levelers, offering up to 18cm of adjustment (on one side only).

4. QUICK TRANSPORTATION

The Leveler's Tip & Glide™ wheels make for fast and easy transportation. Never carry your ladder again.



Ratchet Leveler



Model 26 shown





Durable Aluminum



Multiple Positions



Extension



Built-in Levelers

PRODUCT DESCRIPTION:

Whether you're working on difficult terrain or setting up your ladder on a staircase, the Little Giant® Leveler™ makes uneven ground into a sturdy, safe and dependable workspace. Quickly change from extension to A-frame to 90-degree ladder with the twist of a Rapid Lock™, and extend the Ratchet™ leg levelers for up to 18 cm of adjustment (on one side only) for unlevel surfaces.

Lifetime Limited Warranty • 150kg Australian Industrial Rating AS1892.1:2018

Part Number	Model	A-Frame Highest Standing Level	A-Frame Min/Max Height	A-Frame Max Reach*	Extension Highest Standing Level	Extension Min/Max Size	Storage Height	Storage Width	Weight
16517-448	17	1.5m	1.4m - 2.3m	3.5m	3.5m	2.7m - 4.55m	1.4m	61cm	16kgs
16522-448	22	2.0m	1.7m - 2.9m	4.0m	4.7m	3.3m - 5.75m	1.7m	69cm	20kgs
16526-448	26	2.6m	2.0m - 3.5m	4.6m	5.9m	3.95m - 7.0m	2.0m	76cm	24kgs

*A 1.7m tall person with a 30cm vertical reach

1 LADDER, ∞ JOBS.

1. MULTI-POSITION LADDER

Multi-position ladder easily converts to A-frame, extension, 90-degree, staircase and trestle-and-plank* scaffolding configurations.

2. ROCK LOCK[®]

Easy-to-use Rock Lock[®] adjusters move the inner section of the ladder to the height you need.

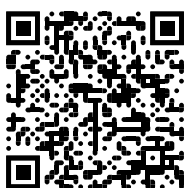
3. TIP & GLIDE[™] WHEELS

Tip & Glide[™] wheels allow for smooth ladder transportation.

4. TWO-PERSON STEPLADDER

Meets AS1892.1:2018 standards. In A-Frame position, it holds 150kg on both sides.

*Trestle brackets and Plank[™] sold separately.





A-Frame



90-Degree



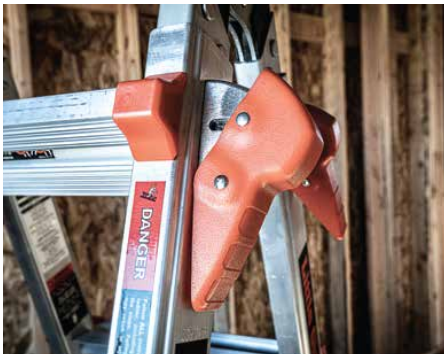
Extension



Tip & Glide™ Wheels



Storage Position



Rock Locks®

PRODUCT DESCRIPTION

The Velocity ladder meets or exceeds AS1892.1:2018 and is rated Type IA to hold 150kg. If you need a rugged, do-it-all ladder, it is the perfect piece of climbing equipment. This lightweight, multi-position ladder will help you get stuff done faster and more efficiently than the average stepladder.

Lifetime Limited Warranty • 150kg Australian Industrial Rating AS1892.1:2018

Part Number	Model	Stepladder Size Min-Max	Stepladder Highest Standing Level Min-Max	Stepladder Max Reach*	Extension Size Min/Max	Extension Highest Standing Level Min-Max	Extension Max Reach*	Storage Height	Storage Depth	Weight
15413-440	13	1.1m - 1.7m	30cm - 90cm	2.9m	3.4m	2.1m - 3.35m	4.3m	1.1m	20cm	16kgs
15417-440	17	1.4m - 2.3m	60cm - 1.5m	3.4m	4.6m	2.7m - 4.55m	5.5m	1.4m	20cm	19kgs
15422-440	22	1.7m - 2.9m	90cm - 2.0m	4.0m	5.8m	3.3m - 5.75m	6.7m	1.7m	20cm	22kgs
15426-440	26	2.0m - 3.5m	1.2m - 2.6m	4.6m	7.0m	3.95m - 7.0m	7.8m	2.0m	20cm	26kgs

*A 1.7m tall person with a 30cm vertical reach



TELESCOPING A-FRAME

Spring-assisted hinges and telescoping sides let you go where expensive powerlifts can't go

EXTRA WIDE FLARED LEGS

Superior stability at extreme heights





STABLE

Strong two-person stepladder



WORK SAFELY

Over obstacles or uneven surfaces.



TRANSPORT

Goes places that other tall A-frame stepladders and power lifts cannot go

5-Year Warranty • 150kg Industrial Rating AS1892.1:2018.

Part Number	Model	A-frame Min/Max height	A-frame Highest standing level	Maximum Reach*	Min/Max Footprint	Storage Height	Storage Width at Base	Storage Depth	Weight
10109	15	2.45m - 4.55m	3.7m	5.7m	1.7 - 3.3m	2.6m	1.0m	20cm	32kgs
10110	17	2.75m - 5.2m	4.3m	6.3m	1.8 - 4.0m	2.9m	1.0m	20cm	36kgs
10121	21	3.35 - 6.4m	5.45m	7.5m	2.1 - 4.65m	3.6m	1.1m	20cm	46kgs

*A 1.7m tall person with a 30cm vertical reach



PROJECT TRAY™ (15012)

The Project Tray offers one convenient location for all of your tools. It includes slots for power cords, screwdrivers, knives and other tools along with recessed trays for paint containers and a magnetic dish for loose nails, screws, nuts and bolts. It can even hold your drink while you work.

The tray fits to any Little Giant Multi-use ladder and holds up to 12kgs.



Compatible with:

Dark Horse, Skyscraper, Epic,

Velocity, Leveler, Conquest All-Terrain

Size: 30cm x 35cm

Storage size: 44cm x 30cm

CARGO HOLD™ (15040)

The Cargo Hold allows you to keep all your tools at arms reach and reduces trips up and down the ladder. It consists of pockets and pouches to help organise your tools in a neat and orderly fashion. Store it inside the ladder or move it to the outside rung for easy access.

Compatible with:

Dark Horse, Epic, Skyscraper, Velocity,
Leveler, Conquest All-Terrain

Size: 32cm x 11cm

Weight: 1kg



AIRDECK (26057)

The Airdeck can be used as a safety handrail and provides confidence and comfort when climbing up and down the ladder.

The other main feature is the tool tray. This is designed to accommodate screwdrivers, drills, hammers paint tins and more. It includes a magnetized section keeping loose screws and nails in place. The tray is rated to hold 11kgs.

Compatible with:

Epic & Conquest All-Terrain

Size: 60cm x 42cm

Weight: 2kg



WORK PLATFORM (10104)

The Work Platform fits on any rung and is rated up to 150kgs.

It's primary use is to act as a wide platform to stand on which reduces foot and leg fatigue when standing on rungs for an extended period of time. It simply slides out and kicks back in when not in use. A second platform can be used as a tool/paint tray.



Compatible with:

Dark Horse, Epic, Skyscraper, Velocity,
Leveler, Conquest All-Terrain

Size: 30cm x 30cm

Storage size: 44cm x 31cm

Weight: 2kg

TELESCOPING PLANK

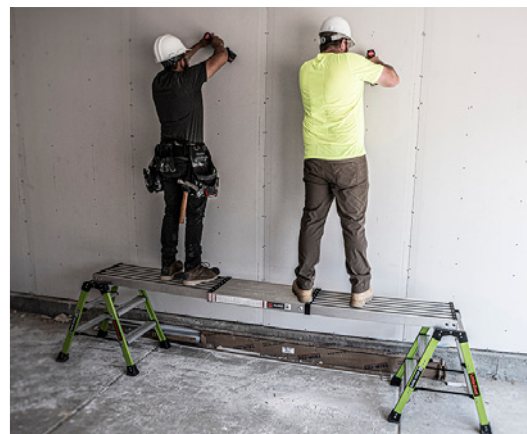
The work planks convert any of our multi-use ladders into simple scaffolding. This high-strength plank is rated to hold 250kgs and enables two people to use both hands. Lengthen it for more coverage & shorten it for easier storage. Features a lockless extension system. Width of all models is 33cm

They are available in 3 lengths:

Small - 1.8m to 2.75m (10069) **Medium** - 2.45m to 3.95m (10813) **Large** - 3.05m to 4.90m (11016)

Compatible with:

Dark Horse, Epic, Velocity, Leveler, Skyscraper, Sure Step



Part Number	Model	Min/Max Length	Storage Width	Storage Depth	Weight
11069	6'-9'	1.8m - 2.7m	34cm	8cm	15kg
11813	8'-13'	2.5m - 3.9m	34cm	8cm	18kg
11915	9'-15'	3.0m - 4.9m	34cm	8cm	20kg

WING SPAN™ WALL STANDOFF (10111)

The Wing Span Wall Standoff is perfect for working around windows, gutters, or any other obstacle that attempt to prevent you from safely completing your task. The extra width also adds more stability and versatility when attached in the extension position. Max width is 1.3m with a standoff of 30cm.

Compatible with:

Dark Horse, Velocity, Leveler, Conquest All Terrain

Size: 1.3m x 30cm Weight: 2.5kg



TRESTLE BRACKETS (Leveler Kit (26999))

Our Trestle Brackets allow you to convert your Ladder into two fixed trestles. Add a Little Giant Telescopic Plank to create a scaffold type set up, reducing the amount of trips required to adjust the ladder.

Trestle Brackets are a different size for each of the ladders below:

Compatible with:

Velocity, Leveler, Epic



TOOL TRAY (15047)

Keeps all your tools within arms reach.

Compatible with all Multi-Function Ladders:

Epic, Leveler, Velocity, Dark Horse 2.0, Conquest All-Terrain

Size: 30cm x 15cm

Weight: 1kg Max Tray Weight: 11kg



LEG LEVELER (12106)

The Leg Leveler is used to stabilize our ladder systems on uneven surfaces ensuring your work environment is as safe as it possibly can be.

Compatible with:

Velocity, Leveler, & Epic Ladders.

****Not suitable for Dark Horse.**





LITTLE GIANT LADDERS AUSTRALIA
www.littlegiantladders.com.au
sales@littlegiantladders.com.au
Sales 1300 339 571

**Little
Giant**
Ladders Australia

CLIMB ON

Preventing Injuries, Saving Lives

Every day nearly 2,000 people are injured while using a ladder. Nearly 100 of them suffer a long-term or even permanent disability. And every day, one person dies, never returning home to their family and friends. These numbers are staggering when you think of each individual's life, and especially the people who love them.

We are driven not by the number of ladders we build, but by the individuals who use them—the hard-working men and women of the world who are the backbone of industry and progress. They put their lives at risk to make things happen. They are dedicated working people with families, hopes and dreams.

If we can help one more of these people get home safely each day, we will have done our job—that's what gets us out of bed each morning. Ladders will always be a necessity in nearly all walks of life, so we need to find ways to prevent these accidents and save lives.

We believe there are two ways to prevent these accidents: First, providing effective, frequent, and relevant safety training; and second, designing safer climbing and access equipment.

Designing for Human Nature

Although it is extremely important, training alone is not enough. Even an experienced, well-trained professional can fall off an ordinary traditional ladder. Our new professional climbing equipment will help operators avoid the three most common causes of both OSHA safety citations and ladder-related injuries and fatalities.

1. Repeated handling of heavy climbing equipment
2. Using the wrong ladder for the job; using the right ladder the wrong way
3. Overreaching

In an era of worldwide progress and innovation, the traditional designs sold by most ladder companies have remained all but unchanged, even though the incidence of ladder injuries increase each year. The ladder industry can do better; and we are leading the charge. We engineer our professional access equipment to prevent as many falls as possible. It is better to build a fence at the top of a cliff than to park an ambulance at the bottom.

The Future of Climbing Equipment

We developed this new professional line of access equipment with numerous features and safeguards that combat the common misuses of ladders. Little Giant has taken the next step in climbing safety by creating products engineered to protect the users with designs that account for human behaviour.

Perhaps our long-held manufacturing creed sums up our commitment to provide the safest access equipment in the world—every weld, every rivet, every rung, and every person matters!

Little Giant Ladders Australia - CLIMB ON®