



PROJECT TRAY™ (15012)

The Project Tray offers one convenient location for all of your tools. It includes slots for power cords, screwdrivers, knives and other tools along with recessed trays for paint containers and a magnetic dish for loose nails, screws, nuts and bolts. It can even hold your drink while you work.

The tray fits to any Little Giant Multi-use ladder and holds up to 12kgs.



Compatible with:

Dark Horse, Skyscraper, Epic,

Velocity, Leveler, Conquest All-Terrain

Size: 30cm x 35cm

Storage size: 44cm x 30cm

CARGO HOLD™ (15040)

The Cargo Hold allows you to keep all your tools at arms reach and reduces trips up and down the ladder. It consists of pockets and pouches to help organise your tools in a neat and orderly fashion. Store it inside the ladder or move it to the outside rung for easy access.

Compatible with:

Dark Horse, Epic, Skyscraper, Velocity,
Leveler, Conquest All-Terrain

Size: 32cm x 11cm

Weight: 1kg



AIRDECK (26057)

The Airdeck can be used as a safety handrail and provides confidence and comfort when climbing up and down the ladder.

The other main feature is the tool tray. This is designed to accommodate screwdrivers, drills, hammers paint tins and more. It includes a magnetized section keeping loose screws and nails in place. The tray is rated to hold 11kgs.

Compatible with:

Epic & Conquest All-Terrain

Size: 60cm x 42cm

Weight: 2kg



WORK PLATFORM (10104)

The Work Platform fits on any rung and is rated up to 150kgs.

It's primary use is to act as a wide platform to stand on which reduces foot and leg fatigue when standing on rungs for an extended period of time. It simply slides out and kicks back in when not in use. A second platform can be used as a tool/paint tray.



Compatible with:

Dark Horse, Epic, Skyscraper, Velocity,
Leveler, Conquest All-Terrain

Size: 30cm x 30cm

Storage size: 44cm x 31cm

Weight: 2kg

TELESCOPING PLANK

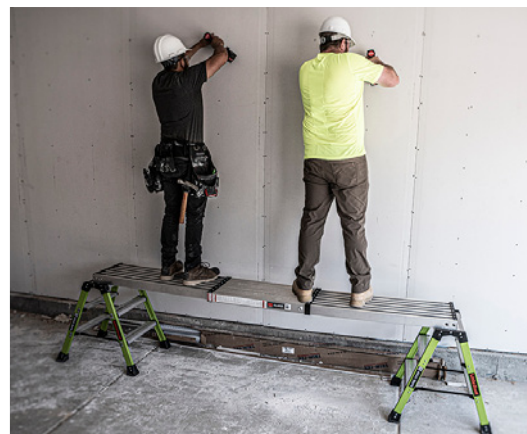
The work planks convert any of our multi-use ladders into simple scaffolding. This high-strength plank is rated to hold 250kgs and enables two people to use both hands. Lengthen it for more coverage & shorten it for easier storage. Features a lockless extension system. Width of all models is 33cm

They are available in 3 lengths:

Small - 1.8m to 2.75m (10069) **Medium** - 2.45m to 3.95m (10813) **Large** - 3.05m to 4.90m (11016)

Compatible with:

Dark Horse, Epic, Velocity, Leveler, Skyscraper, Sure Step



Part Number	Model	Min/Max Length	Storage Width	Storage Depth	Weight
11069	6'-9'	1.8m - 2.7m	34cm	8cm	15kg
11813	8'-13'	2.5m - 3.9m	34cm	8cm	18kg
11915	9'-15'	3.0m - 4.9m	34cm	8cm	20kg

WING SPAN™ WALL STANDOFF (10111)

The Wing Span Wall Standoff is perfect for working around windows, gutters, or any other obstacle that attempt to prevent you from safely completing your task. The extra width also adds more stability and versatility when attached in the extension position. Max width is 1.3m with a standoff of 30cm.

Compatible with:

Dark Horse, Velocity, Leveler, Conquest All Terrain

Size: 1.3m x 30cm Weight: 2.5kg



TRESTLE BRACKETS (Leveler Kit (26999))

Our Trestle Brackets allow you to convert your Ladder into two fixed trestles. Add a Little Giant Telescopic Plank to create a scaffold type set up, reducing the amount of trips required to adjust the ladder.

Trestle Brackets are a different size for each of the ladders below:

Compatible with:

Velocity, Leveler, Epic



TOOL TRAY (15047)

Keeps all your tools within arms reach.

Compatible with all Multi-Function Ladders:

Epic, Leveler, Velocity, Dark Horse 2.0, Conquest All-Terrain

Size: 30cm x 15cm

Weight: 1kg Max Tray Weight: 11kg



LEG LEVELER (12106)

The Leg Leveler is used to stabilize our ladder systems on uneven surfaces ensuring your work environment is as safe as it possibly can be.

Compatible with:

Velocity, Leveler, & Epic Ladders.

****Not suitable for Dark Horse.**

